

Cormont Road, London SE5

Guide Price: £925,000

1802 sq ft



Forming part of this beautiful converted Seminary opposite Myatt's Field Park, an amazing 3/4 bed Camberwell house in St. Gabriel's Manor.

Finished to an excellent standard throughout, the house offers a flexible arrangement, with the potential for 3 or 4 bedrooms, 2 or 3 living rooms and good space for working from home. The main reception space provides a huge, double-height living area, with easy access to a large contemporary kitchen and a useful mezzanine study. There are 3 double bedrooms and two luxury bathrooms. The top floor loft room has beautiful exposed beams and leads onto a cool, urban roof terrace.

With in excess of 1800 sqft of internal space available, this unique home is bigger than most houses in the area but with the advantage of the excellent security provided by St. Gabriel's Manor. There is a daytime caretaker, secured allocated parking and excellent security system.

St. Gabriel's Manor is located directly opposite Myatt' Fields - <http://www.myattsfieldspark.info/index.html> - a stunning Victorian park with Green Flag status. The neighbourhood is becoming increasingly popular with families and those looking for a quiet life but within striking distance of Central London. Camberwell itself has an array of fantastic gastropubs and restaurants, including [www.thebear-freehouse.co.uk](http://www.thebear-freehouse.co.uk) , [www.thetigerpub.com](http://www.thetigerpub.com) and [www.angelsandgypsies.com](http://www.angelsandgypsies.com)

Leasehold: 150 years from 1997

Awaiting EPC

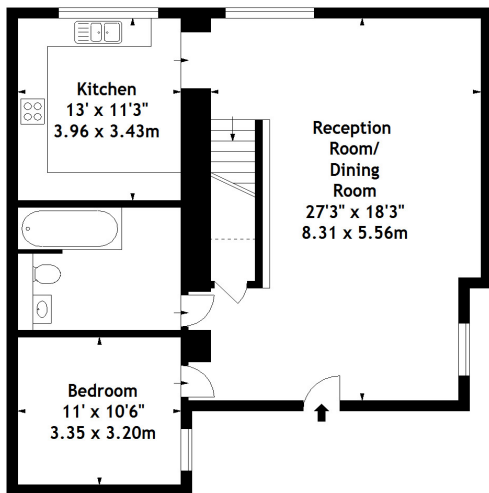
Cormont Road, London SE5

Guide Price: £925,000

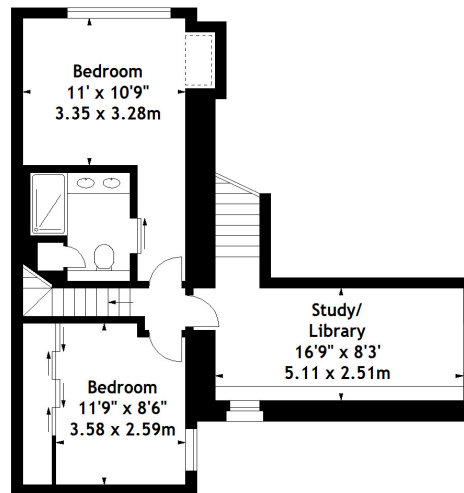
1802 sq ft

Floor Plan

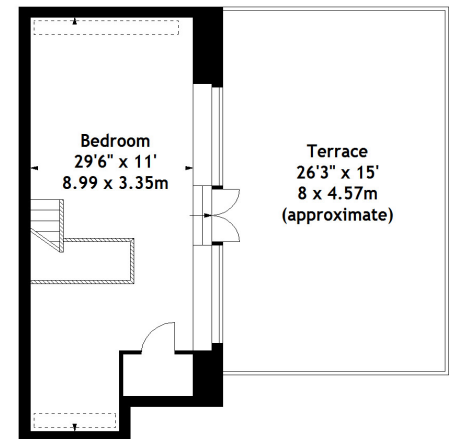
St. Gabriels Manor,  
Cormont Road, SE5  
Approx. Gross Internal Area  
1802 Sq Ft - 167.41 Sq M



Ground Floor



First Floor



Second Floor

Measured in accordance with RICS guidelines. Every attempt is made to ensure accuracy, however all measurements are approximate. This floor plan is for illustrative purposes only and is not to scale.  
© Datography Ltd 2013  
Photographs \* Floorplans \* Virtual Tours  
Tel: 0845 643 4401 www.datography.com

Cormont Road, London SE5

Guide Price: £925,000

1802 sq ft

Property Images

