

Wenlock Road, London N1

Guide Price: £600

1183 sq ft



An amazing rental opportunity is this massive one bedroom penthouse loft apartment, of 1183 sqft, on the top of The Royle Building in Islington.

Featuring a wonderful main living space with fantastic high ceilings, vast floor-to-ceiling windows and hardwood flooring. There is a smart, modern open-plan kitchen with all integrated appliances and access to large, private roof terrace with oblique views of The Regent's Canal. The lower floor also has a guest shower room.

The entire mezzanine level provides the bedroom area, with large private bathroom, plenty of wardrobe space and a separate dressing room or alternatively a good study area.

The Royle Building is a beautiful converted printworks in the Wenlock area of Islington, close to Shoreditch and Clerkenwell. There is a daytime caretaker and secured parking. The local neighbourhood offers some of London's most celebrated bars, clubs and restaurants including Jamie Oliver's [www.fifteen.net](http://www.fifteen.net) / and amazingly cool coffee at [www.shoreditchgrind.com](http://www.shoreditchgrind.com) at Old Street Roundabout. Transport links can be found at Angel and Old Street stations, which are both approximately 10 minutes on foot.

This rare chance to rent a one bedroom penthouse loft is available from 7th August - UNFURNISHED.

&nbsp;

&nbsp;

c

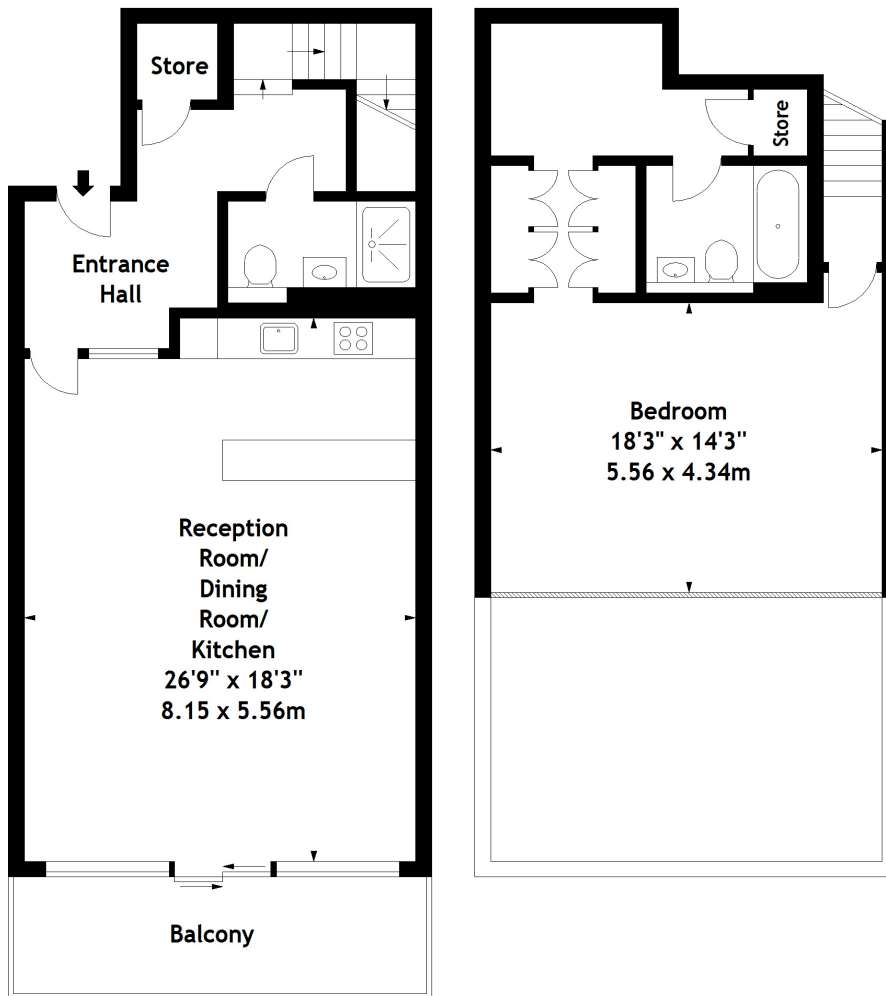
Wenlock Road, London N1

Guide Price: £600

1183 sq ft

Floor Plan

Wenlock Road,  
Royle Building, N1  
Approx. Gross Internal Area  
1183 Sq Ft - 109.90 Sq M



Fifth Floor

Mezzanine Floor

Measured in accordance with RICS guidelines. Every attempt is made to ensure accuracy, however all measurements are approximate. This floor plan is for illustrative purposes only and is not to scale.

© Datography Ltd 2013

Photographs \* Floorplans \* Virtual Tours  
Tel: 0845 643 4401 www.datography.com

Wenlock Road, London N1

Guide Price: £600

1183 sq ft

Property Images

