

Foulden Terrace, London N16

Guide Price: £599,995

620 sq ft



A complete one-off, this detached Victorian coach house in Stoke Newington, has been sensitively restored by the current owners with exceptional attention to detail.

Essentially the perfect one bedroom house, the ground floor offers the double bedroom and beautifully tiled bathroom and the entire first floor is a large dual aspect living space, with contemporary open-plan kitchen. There is the bonus of a large loft area for storage.

Located in a lovely gated mews, just moments from Stoke Newington High Street, Rectory Road Station and benefits from the amazing transformation of nearby Dalston, with its new London Overground station and a huge number of bars and pop ups to keep one entertained.

Freehold

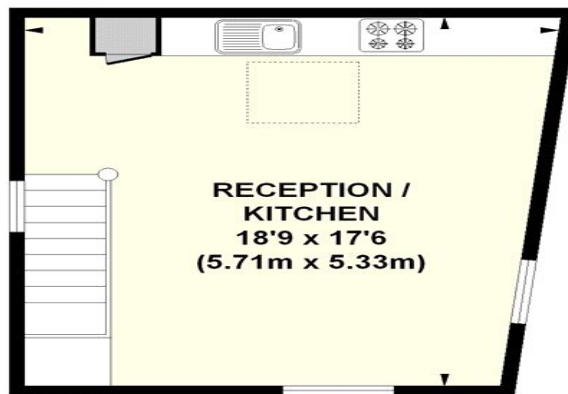
c

Foulden Terrace, London N16

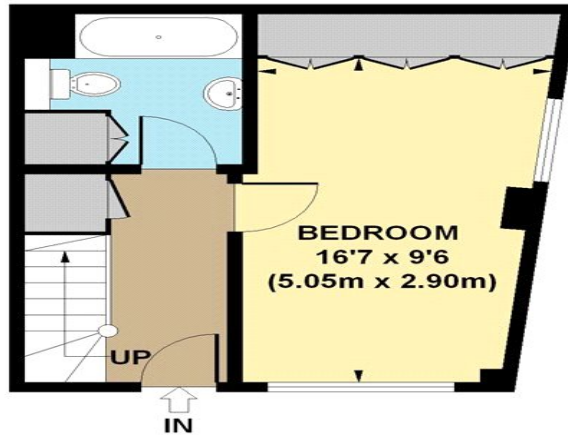
Guide Price: £599,995

620 sq ft

Floor Plan



**FIRST FLOOR
GROSS INTERNAL
FLOOR AREA 310 SQ FT**



**GROUND FLOOR
GROSS INTERNAL
FLOOR AREA 310 SQ FT**

APPROX. GROSS INTERNAL FLOOR AREA 620 SQ FT / 57.6 SQ M

Foulden Terrace, London N16

Guide Price: £599,995

620 sq ft

Property Images

