

Milborne Street, London E9

Guide Price: £980,000

1352 sq ft



Stunningly located, this semi-detached Georgian house in Victoria Park Studios is beautifully presented in ready to move in condition.

The accommodation is arranged over three floors, with classic Georgian proportions and a sensitive restoration program offering exceptional attention to detail.

There are a wealth of grand classic features retained and striking bespoke fittings including oak parquet flooring, striking décor and bathed in natural light. The house has a stunning living/entertaining space with access to a secluded courtyard garden, a magnificent oak kitchen with Siemens appliances, four double bedrooms with built-in oak wardrobes, a marbled bathroom and shower room and useful loft storage space.

The location is fantastic for those looking to move East, or indeed to upgrade within the area. The secure gated mews is landscaped and clearly well looked after; it comes with parking. The mews is walking distance to both Victoria Park and London Fields, a perfect place to enjoy the many amenities that this area has to offer.

Freehold

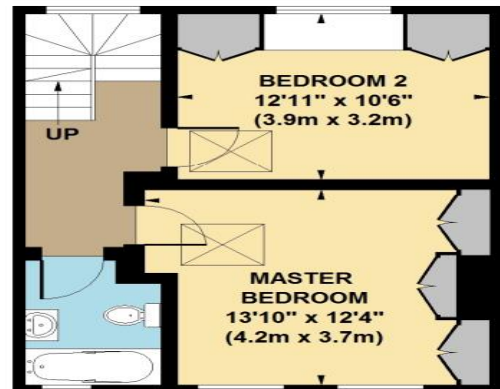
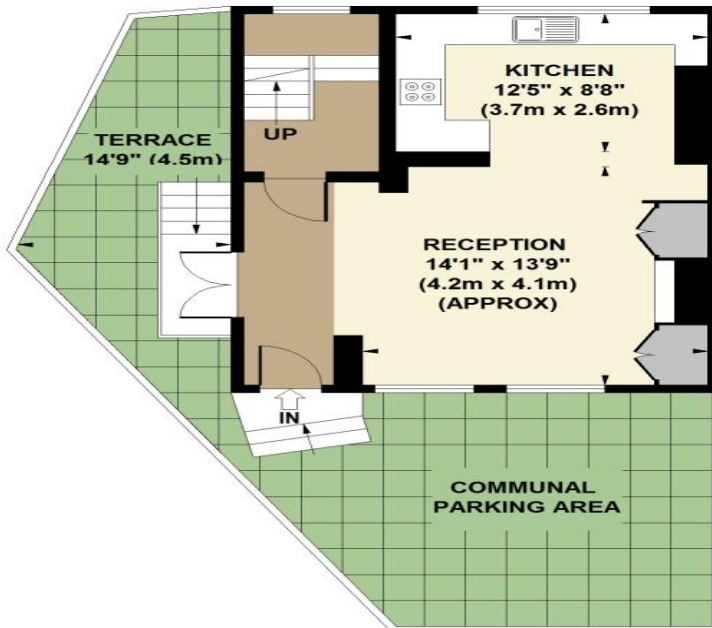
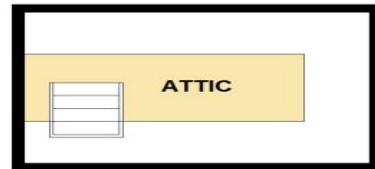
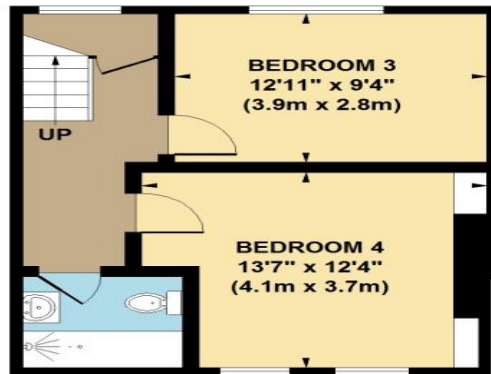
d

Milborne Street, London E9

Guide Price: £980,000

1352 sq ft

Floor Plan



APPROX. GROSS INTERNAL FLOOR AREA
1352 SQ FT / 125.0 SQ M

Milborne Street, London E9

Guide Price: £980,000

1352 sq ft

Property Images

