

Hopton Street, London SE1

Guide Price: £699,950

603 sq ft



A perfect One bedroom apartment in the warehouse building at Bankside Lofts.

On the first floor and therefore with fantastic arched period windows, the apartment has a bright, neutral feel, with high ceilings and a modern refurbishment. There is beautiful oak flooring throughout and some stunning bespoke plasterwork.

The simple, modern kitchen is completely open plan and is fully equipped for a flat of this size. There is a good sized double bedroom with two wardrobes and contemporary, fully tiled shower room.

Bankside Lofts - [www.banksidelofts.org.net](http://www.banksidelofts.org.net) - is one of London's premier loft buildings, offering incredible living spaces - in this case the perfect one bed loft layout - just moments from The River Thames and The Tate Modern. Residents have 24 hour security personnel and the use of a gym. There is parking available to rent separately.

The building is located in one of the fastest growing postcodes in London. Once the creative and artistic hub, The Southbank is now seeing massive overseas investment and even better transport links.

Leasehold: 999 years from 1995

Awaiting EPC

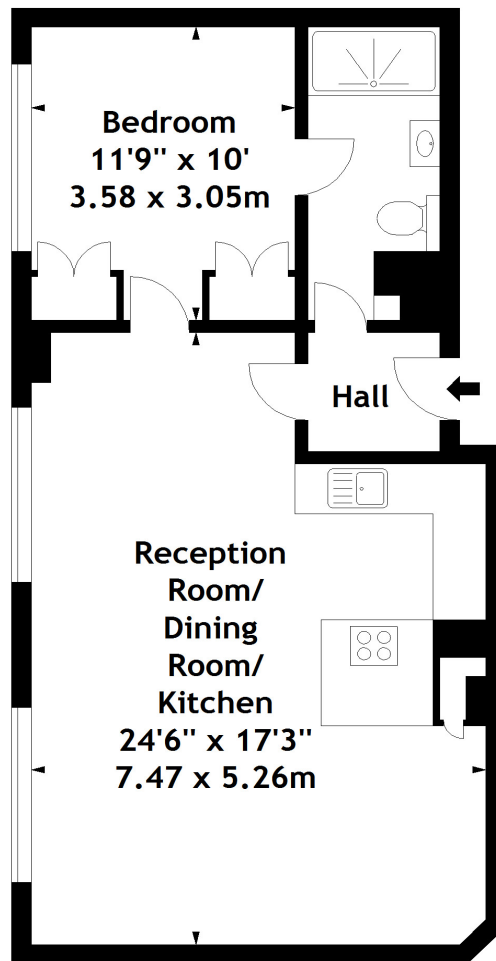
Hopton Street, London SE1

Guide Price: £699,950

603 sq ft

Floor Plan

Bankside Lofts, SE1  
Approx. Gross Internal Area  
603 Sq Ft - 56.02 Sq M



First Floor

Measured in accordance with RICS guidelines. Every attempt is made to ensure accuracy, however all measurements are approximate.

This floor plan is for illustrative purposes only and is not to scale.

© Datography Ltd 2013

Photographs \* Floorplans \* Virtual Tours

Tel: 0845 643 4401 [www.datography.com](http://www.datography.com)

Hopton Street, London SE1

Guide Price: £699,950

603 sq ft

Property Images

