

Wapping Wall, London E1W

Guide Price: £1,450

2344 sq ft



One of only eight available residential spaces in Metropolitan Wharf, this amazing penthouse loft offers 2344 sqft of unbelievable style and quality.

The redevelopment of Metropolitan Wharf has bucked the usual trend in Wapping for rather staid 'warehouse style' apartments in favour of a brilliant creative living and working hub on its famous cobbled streets. The main portion of the building is given over to location spaces, restaurants and offices but sitting proudly in the original pitch of the roof there are eight genuine penthouse warehouse lofts, with the emphasis of huge space and one-off bespoke design, courtesy of Tom Dixon's Design Research Studio.

The specification list is endless but essentially modern 21st century apartments have been created out of the original warehouse. The apartments have under floor heating, air conditioning, wired for sound etc (all controlled via an ipad) which are barely noticeable because the original features remain intact, or beautifully crafted industrial fittings hide them.

This particular space has an abundance of original features intact, epic living proportion and jaw dropping materials throughout. There is a completely private roof terrace with City views and a dedicated parking space.

Quite simply, these are the finest warehouse spaces to come onto the rental market, anywhere in London, for many years.

Wapping, for so many years just a dormitory for city workers, is emerging as a well connected creative hub. Already well known for its quiet, historic riverside location, the conversion of Metropolitan Wharf and the nearby Wapping Project are adding a new dimension to the area. Wapping Station connects with The East End of London within minutes and The City is within walking distance. City Airport is a short drive away and has opened many more new routes in the last few years.

Please Call for Availability.

Administration fees apply to each Tenant - POA

Awaiting EPC

Wapping Wall, London E1W

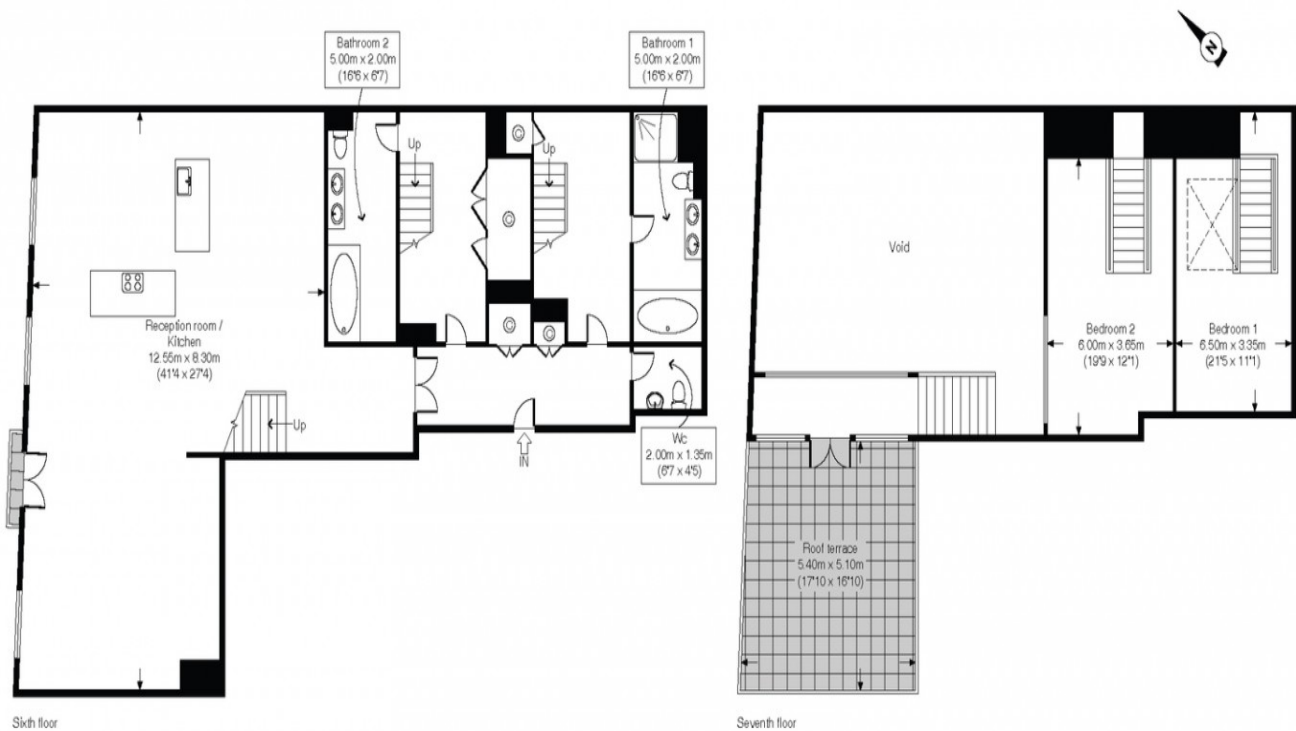
Guide Price: £1,450

2344 sq ft

Floor Plan

Wapping Wall, E1W

Approximate gross internal area 217.74 sq m / (2,344 sq ft) Excluding void
"Approximate" area of roof terrace 27.44 sq m / (295 sq ft)



wapping@cluttons.com 020 7488 4858 www.cluttons.com

FOR ILLUSTRATIVE PURPOSES ONLY. NOT TO SCALE
The position and size of doors, windows, appliances and any other features are approximate only.
Where applicable the approximate gross internal area excludes restricted head height. © zentuvo

Wapping Wall, London E1W

Guide Price: £1,450

2344 sq ft

Property Images

