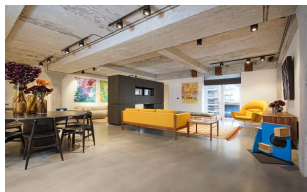


Parkgate Road, London SW11

Guide Price: £2,900,000

2126 sq ft



<div class="page" title="Page 4">  
<div class="section">  
<div class="layoutArea">  
<div class="column">

Delivered by bespoke developers CLPD, this three bedroom waterside warehouse loft is located on the first floor of an architecturally impressive former industrial warehouse in Ransome's Dock.

<div class="page" title="Page 4">  
<div class="section">  
<div class="layoutArea">  
<div class="column">

In the vicinity of Norman Foster's iconic architectural practice at Riverside One and adjacent to Vivienne Westwood's fashion house, the apartment is the latest super cool, high end living space to be created in this designer enclave

<div class="page" title="Page 4">  
<div class="section">  
<div class="layoutArea">  
<div class="column">

Extending to 2,126 sq ft and renovated to the highest specification with premium materials, CLPD has harnessed an exquisite combination of the industrial and organic to execute a sumptuous yet elegant finish.

<div class="page" title="Page 8">  
<div class="section">  
<div class="layoutArea">  
<div class="column">  
<div class="page" title="Page 3">  
<div class="section">  
<div class="layoutArea">  
<div class="column">

Located next to Albert Bridge, just west of Battersea Park, Ransome's Dock is well situated for this green London oasis hugging The River Thames, with all its onsite attractions. The amenities of bustling Parkgate Road and pretty Battersea Square are on your doorstep. Source Restaurant, The Prince Albert Gastro Pub, The Butcher & Grill and Gordon Ramsey's London House, are all conveniently closeby for those that crave good food and drink.

Ransome's Dock is also just a stone's throw from fashionable Chelsea and the extensive amenities of the famous King's Road, leading to smart Sloane Square and onto Sloane Street, with its elegant shops and world-famous designer brands.

Parkgate Road, London SW11

Guide Price: £2,900,000

2126 sq ft

Secured off-street parking is included in the sale

</div>

</div>

</div>

</div>

</div>

</div>

</div>

</div>

</div>

</div>

</div>

</div>

</div>

</div>

</div>

</div>

&nbsp;

</div>

</div>

</div>

</div>

c

Parkgate Road, London SW11

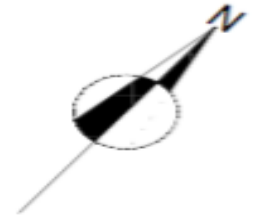
Guide Price: £2,900,000

2126 sq ft

Floor Plan

**RANSOMES DOCK EAST,  
BATTERSEA, LONDON, SW11**

Approximate Gross Internal Area : 197.5 Sq. metres  
2126 Sq. feet



**FIRST FLOOR**

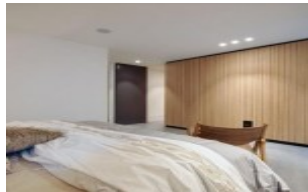
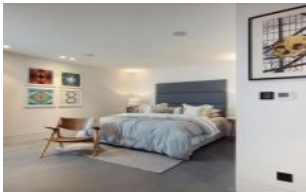
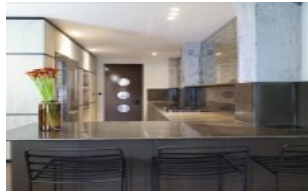
Measurements taken from development brochure

Parkgate Road, London SW11

Guide Price: £2,900,000

2126 sq ft

Property Images



Parkgate Road, London SW11

Guide Price: £2,900,000

2126 sq ft

