

National Terrace, London SE16

Guide Price: £1,650,000

1386 sq ft



A three bedroom freehold house on National Terrace, located along the banks of the River Thames, offering spectacular views out across the river towards the City and Tower Bridge.

The house has been refurbished extensively throughout, creating a modern open loft feel. The first floor has a large open plan kitchen and dining room with direct access out onto a private garden, which leads out onto a large communal terrace directly on the river.

The reception room comprises of the whole first floor with a balcony covering the width of it. The second bedroom on the second floor looks directly out onto the river whilst the third bedroom is currently being used as a walk in dressing room to compliment the master bedroom. The guest bathroom divides both these two rooms.

The upper floor has an extravagant suite hosting the master bedroom with an en suite bathroom and fitted wardrobes.

National Terrace is located along the very popular Bermondsey Wall East between Shad Thames and Rotherhithe Village. Bermondsey and Rotherhithe stations are both close by. The house has a large bike store/storage area attached to the property. National Terrace was originally developed by Berkley Homes and is one of the very few freehold developments located along the River Thames in Central London.

FREEHOLD

Awaiting EPC

National Terrace, London SE16

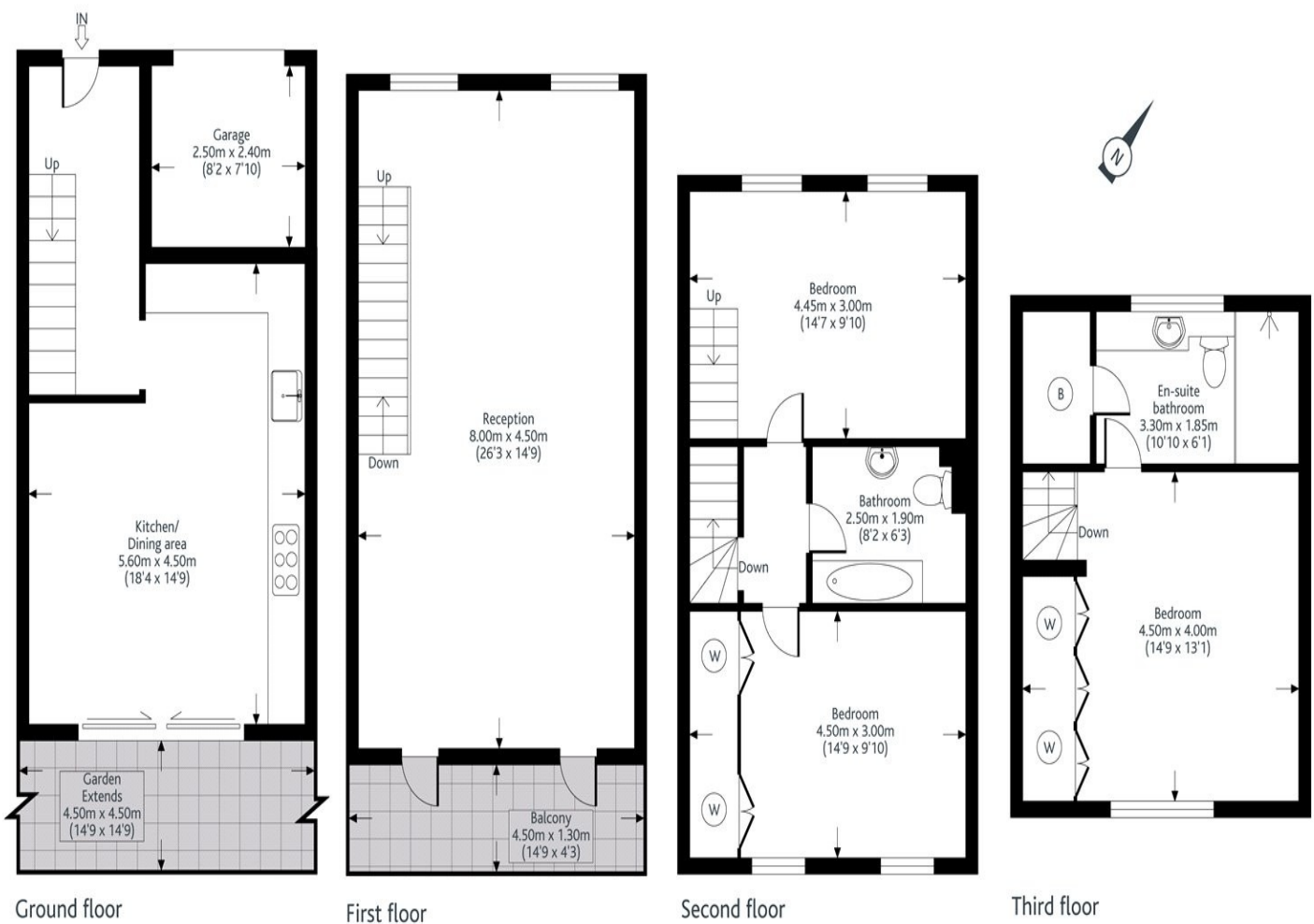
Guide Price: £1,650,000

1386 sq ft

Floor Plan

National Terrace, SE16
Approximate gross internal area 129 sq m / (1,386 sq ft)

CLUTTONS



towerbridge@cluttons.com 020 7407 3669 cluttons.com

FOR ILLUSTRATIVE PURPOSES ONLY. NOT TO SCALE

The position and size of: doors, windows, appliances and any other features are approximate only.
Where applicable the approximate gross internal area excludes restricted head height. © zentuvo

National Terrace, London SE16

Guide Price: £1,650,000

1386 sq ft

Property Images

