

Merchant Court, London E1W

Guide Price: £1,425,000

1525 sq ft



This stunning riverside apartment with two bedrooms & two bathrooms, is located in one of Wapping's premier warehouse conversions.

Merchant Court exceeds 1,500 sq ft of warehouse living, offering unrestricted views out across the river Thames and Canary Wharf. The apartment has a rich array of original warehouse character throughout, including exposed brickwork, iron columns and loading bay doors.

The reception room alone exceeds 900 sq ft of open-plan double fronted living accommodation. Both the bedrooms are good sized doubles, with large fitted wardrobes, and the master bedroom benefitting from an en suite bathroom. There is a separate guest bathroom, spacious entrance hall with double doors leading into the reception room and a large storage cupboard.

Merchant Court is located along the cobbled streets of Wapping Wall, and it benefits from seven day portage, lift access, one secure allocated car parking space and a large communal river fronted terrace as well as a landscaped courtyard. It is in easy access for local shops, the very popular Prospect of Whitby pub, Shadwell Basin and Wapping tube station.

SHARE OF FREEHOLD

Awaiting EPC

Merchant Court, London E1W

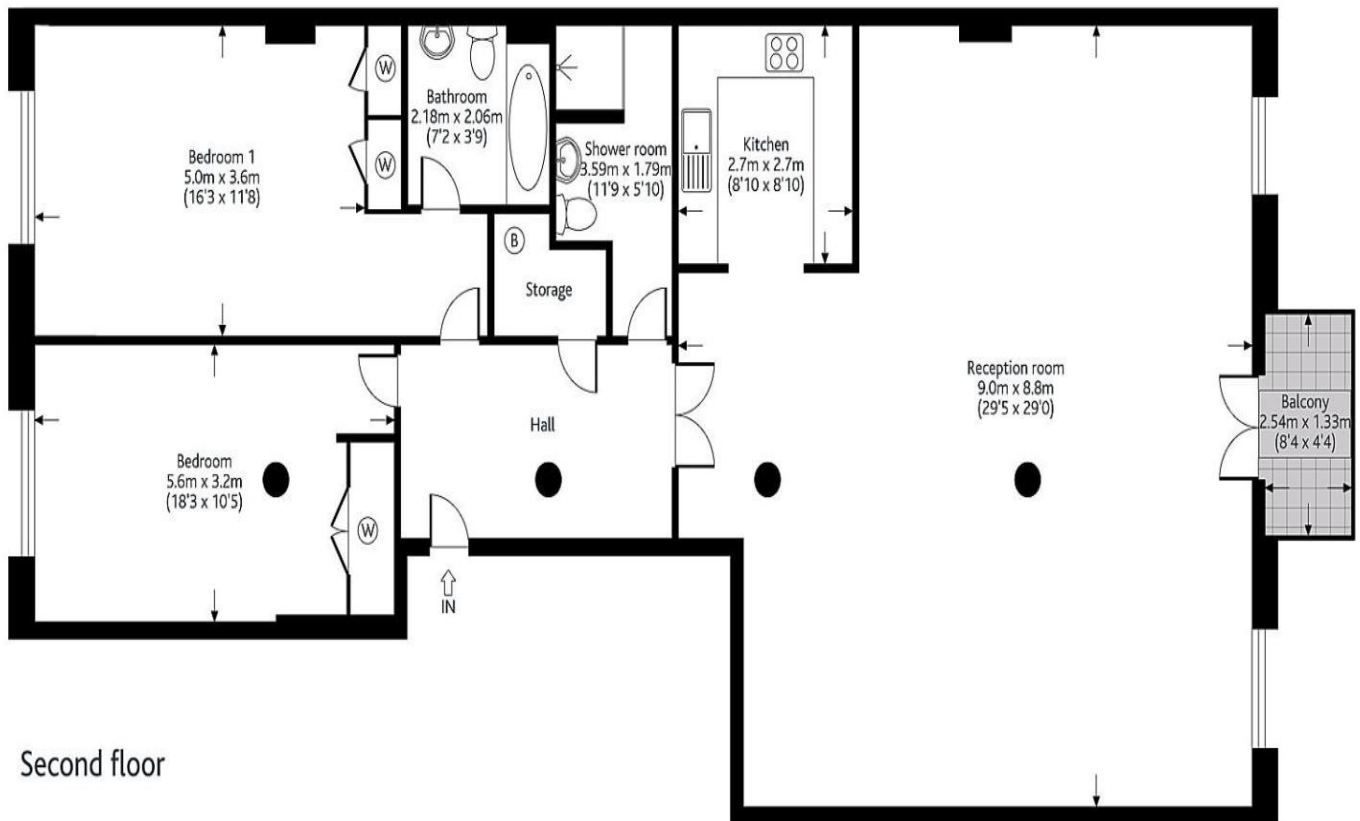
Guide Price: £1,425,000

1525 sq ft

Floor Plan

Merchant Court, Wapping Wall, E1W  
Approximate gross internal area 140 sq m / (1,509 sq ft)

CLUTTONS



Second floor

wapping@cluttons.com 020 7488 4858 cluttons.com

FOR ILLUSTRATIVE PURPOSES ONLY. NOT TO SCALE  
The position and size of: doors, windows, appliances and any other features are approximate only.  
Where applicable the approximate gross internal area excludes restricted head height. © zentuvo

Merchant Court, London E1W

Guide Price: £1,425,000

1525 sq ft

Property Images

