

Lyham Road, London SW2

Guide Price: £995,000

1770 sq ft



On the first floor of a beautiful converted Victorian school building, a stunning Brixton loft apartment presented in outstanding condition and offering superb lateral space.

Offering the style of living for which these impressive buildings were meant to be converted, this loft is uncompromising in its layout and design but with a flexibility that comes from having such great lateral space to work with.

The first floor features acres of stunning parquet wood flooring throughout, starting in the huge kitchen/dining room, with its impressive kitchen island and stainless steel appliances. There is a seamless flow into the main living room, with its 3.8m high ceilings and clever raised sitting area that draws the huge period windows towards the room and creates excellent storage. There is a gas fireplace and large storage cupboard.

Also on the first floor, a study/bedroom 3 and a large walk-in shower room.

The mezzanine level offers a stunning master bedroom, with its huge, self-indulgent bathroom and masses of wardrobe space. Across the hall is an open-plan bedroom 2/study area overlooking the main living room.

This glorious loft forms part of Park Lofts, one of the original Victorian school houses to be converted to shell and core in the 1990s. No loft in this building is the same and there is a laid-back, creative atmosphere here. There are communal garden areas, allocated parking and a daytime caretaker.

Park Lofts is located between Clapham Common and Brixton., giving one access to both the Northern Line and the Victorian Line on the underground. Both areas offer many after work distractions, with Brixton now becoming one of London's hottest gastronomic destinations.

Share of Freehold

&nbsp;

&nbsp;

&nbsp;

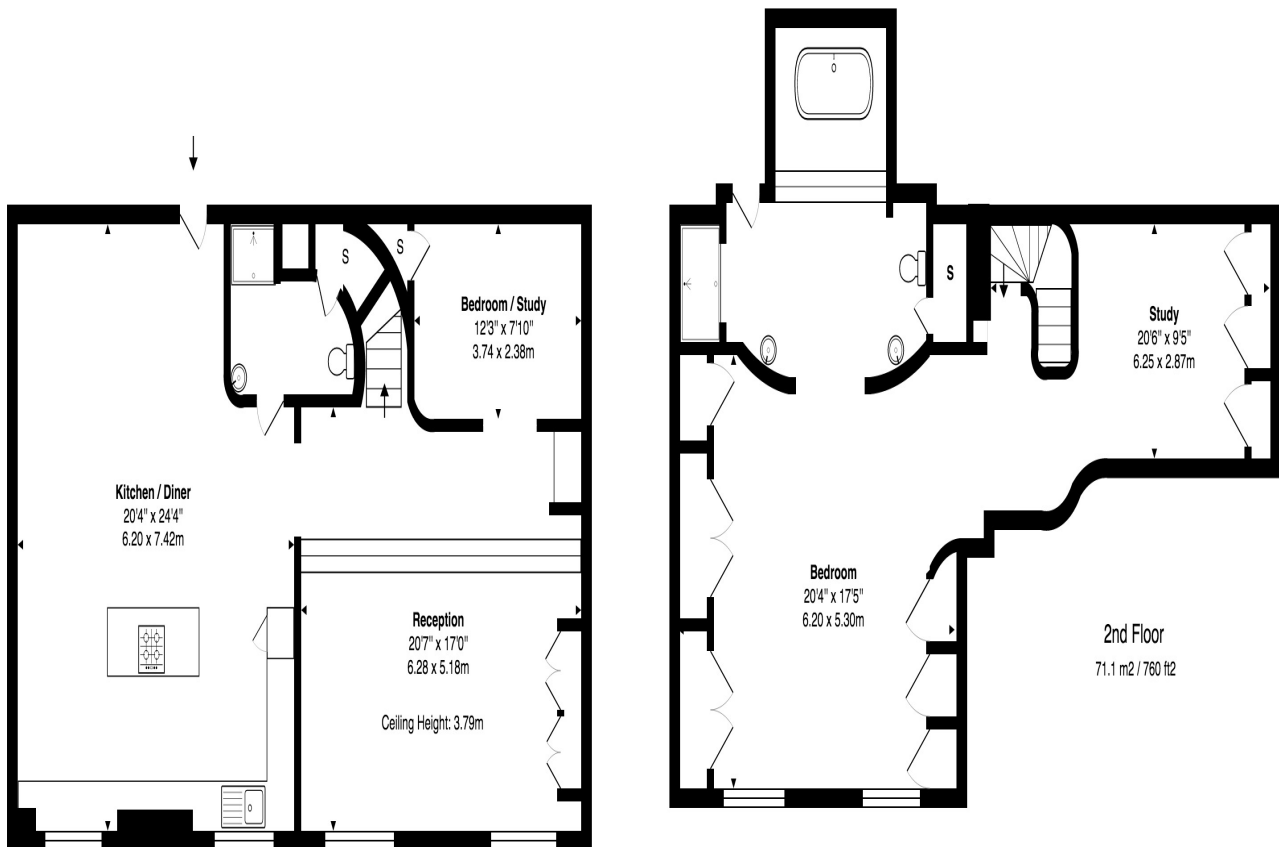
Awaiting EPC

Lyham Road, London SW2

Guide Price: £995,000

1770 sq ft

Floor Plan



Elevated 1st Floor

93.3 m<sup>2</sup> / 1010 ft<sup>2</sup>

Total Area: 1770 ft<sup>2</sup> ... 164.4 m<sup>2</sup>

All measurements are approximate and for display purposes only



Lyham Road, London SW2

Guide Price: £995,000

1770 sq ft

Property Images



Lyham Road, London SW2

Guide Price: £995,000

1770 sq ft

