

Bell Yard Mews, London SE1

Guide Price: £650,000

993 sq ft



A perfectly located Bermondsey live work apartment offering almost 1000 sqft of flexible space at an affordable price in a quiet mews off central Bermondsey Street.

The Hub, as the name suggests, is small creative building in Bell Yard Mews, itself an eclectic little pocket of lofts and small businesses just off Bermondsey Street.

This particular second floor space is the perfect over-sized one bedroom apartment, with a private balcony off the modern kitchen and a very large living and working area, which could easily be partitioned off, if one required a more private work space with its own entrance.

The building benefits from a fantastic resident's communal roof terrace, with wonderful views of Bermondsey's iconic warehouse district, as well as The Shard and many London landmarks.

Bell Yard Mews is smack, bang in the middle of Bermondsey Street, the creative heart of South London and one of London's first warehouse districts. It is home to some of London's most recognised destinations, such as White Cube Gallery, The Fashion and Textile Museum and for foodies, The Garrison Pub and the award-winning restaurants of Jose Pizarro.

London Bridge Station, The Shard and Borough Market are all within 5 minutes on foot.

We believe that this a superb opportunity to buy into this fantastic part of London, whether as genuine live/work, London pied-a-terre or rental investment.

Awaiting EPC

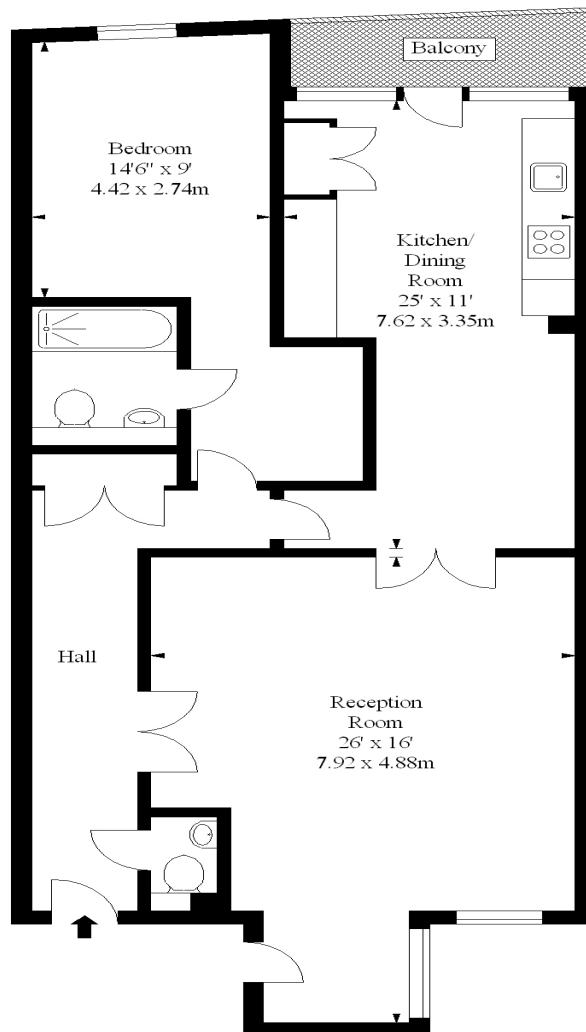
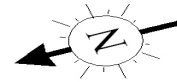
Bell Yard Mews, London SE1

Guide Price: £650,000

993 sq ft

Floor Plan

**The Hub,
Bell Yard Mews, SE1**
Approx. Gross Internal Area *
993 Ft² - 92.25 M²



Second Floor

Illustration For Identification Purposes Only. Not To Scale

* As Defined by RICS - Code of Measuring Practice

© International Floorplans.

Tel 0094 115 345958

www.ifpl.lk

Bell Yard Mews, London SE1

Guide Price: £650,000

993 sq ft

Property Images

