

Shepherdess Walk, London N1

Guide Price: £775

1314 sq ft



On the third floor of the noted warehouse conversion that is The Canal Building, a large and well proportioned two bed loft apartment of 1314 sqft.

This particular loft is one of only five in the whole the building that enjoy an entire floor to themselves and benefit from high ceilings, huge crittall windows and masses of volume and light. Understandably, they are popular with live/work users, such as photographers and artists.

Accessed via lift (or very industrial staircase) to the third floor, the entrance hall features masses of storage, a theme continued throughout the apartment. The main living space offers pretty epic proportions and great volume. There is wood flooring throughout, an open-plan kitchen area and a useful area of this that could be used a work space or dining area if needed. There are really great views towards the city beyond.

To the rear of the apartment are two very good sized double bedrooms, with the master bedroom having an entire wall of wardrobes and a large private bathroom with walk in shower. There is also a guest shower room, which doubles as a utility room.

The 5 resident?s in this part of the building have the use a lovely shared roof terrace, a sunny south facing area to relax and gaze at the city skyline.

The Canal Building is one of the original Shoreditch/Islington warehouse loft conversions, converted to ?shell? specification in 2000. All the apartments are different, which creates an interesting mix of residents, from City workers to the arts and media circle. The local neighbourhood offers some of London?s most celebrated bars, clubs and restaurants and nearby on City Road, a new tech neighbourhood is being built at a pace at the ?Silicon Roundabout?, bringing with it 4 and 5 Star hotels and yet more infrastructure.

Available early June 2019 for £775 per week

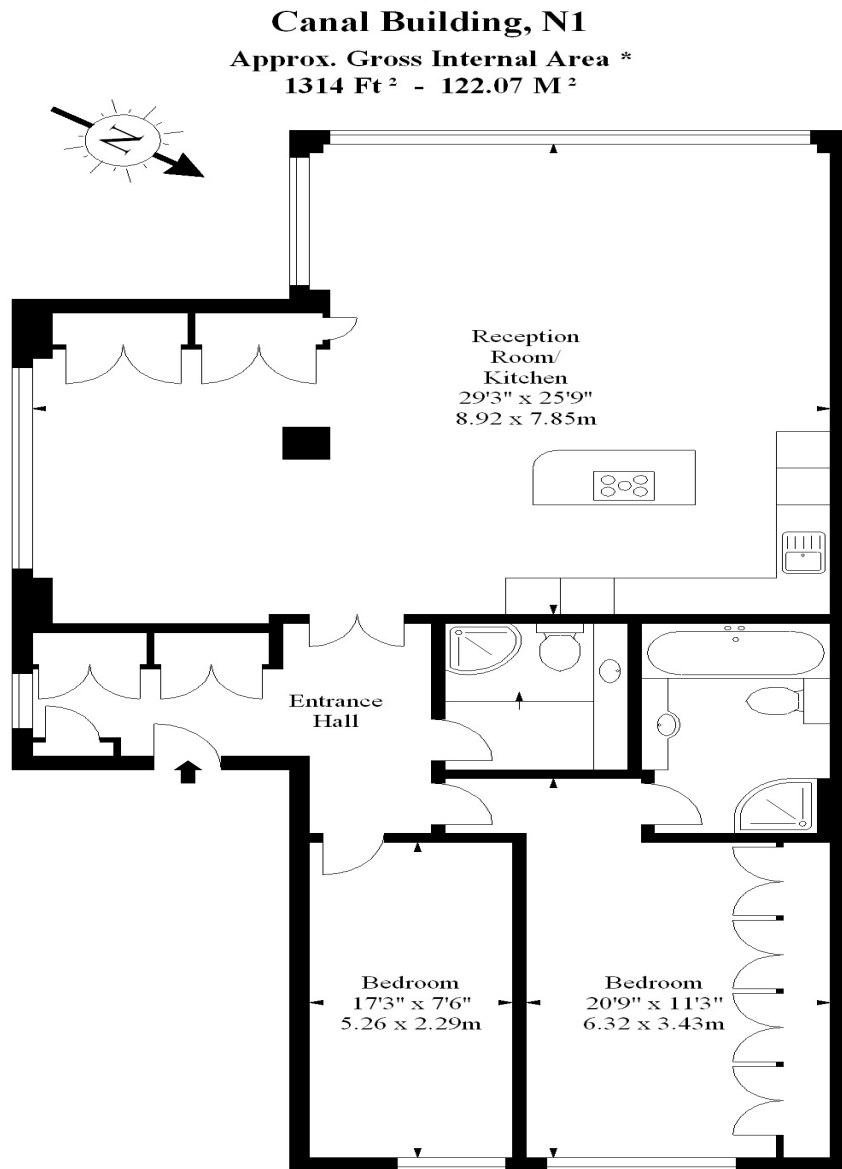
Tenant Fees apply

&nbsp;

Awaiting EPC

1314 sq ft

Floor Plan



**Illustration For Identification Purposes Only. Not To Scale**

\* As Defined by RICS - Code of Measuring Practice

© International Floorplans.

Tel 0094 115 345958

www.ifpl.lk

Shepherdess Walk, London N1

Guide Price: £775

1314 sq ft

Property Images

